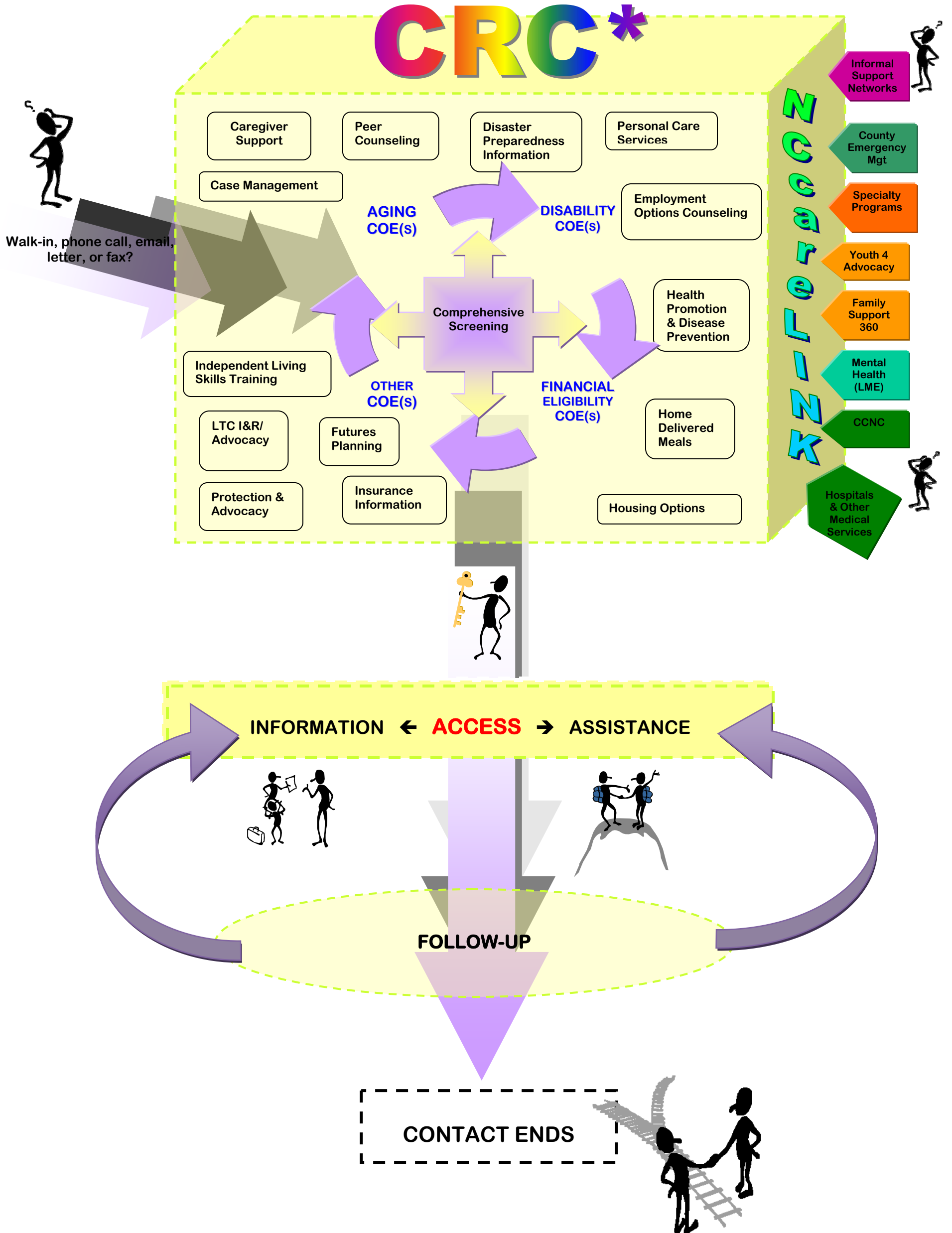


NC Community Resource Connections for Aging & Disabilities (CRC)*



* The "brand" or identity for Aging and Disability Resource Centers in NC is "Community Resource Connections for Aging & Disabilities" (CRC). This identity has evolved as our vision for "no wrong door" access to long-term services and supports has become clearer. The change reflects the fact that a critical component for the success of this initiative is community collaboration. Resource Connections articulates the expectation of what people will receive when they make contact with the CRC partners. Because of these partnerships, people who are aging and people with disabilities will enjoy streamlined (more efficient) access to long term services and supports enabling them to live and actively participate in the "community" when it is their preference to do so. "For Aging and Disabilities," identifies the target group of this initiative.

Diagram of Information, Referral, Assistance, and Access Process