

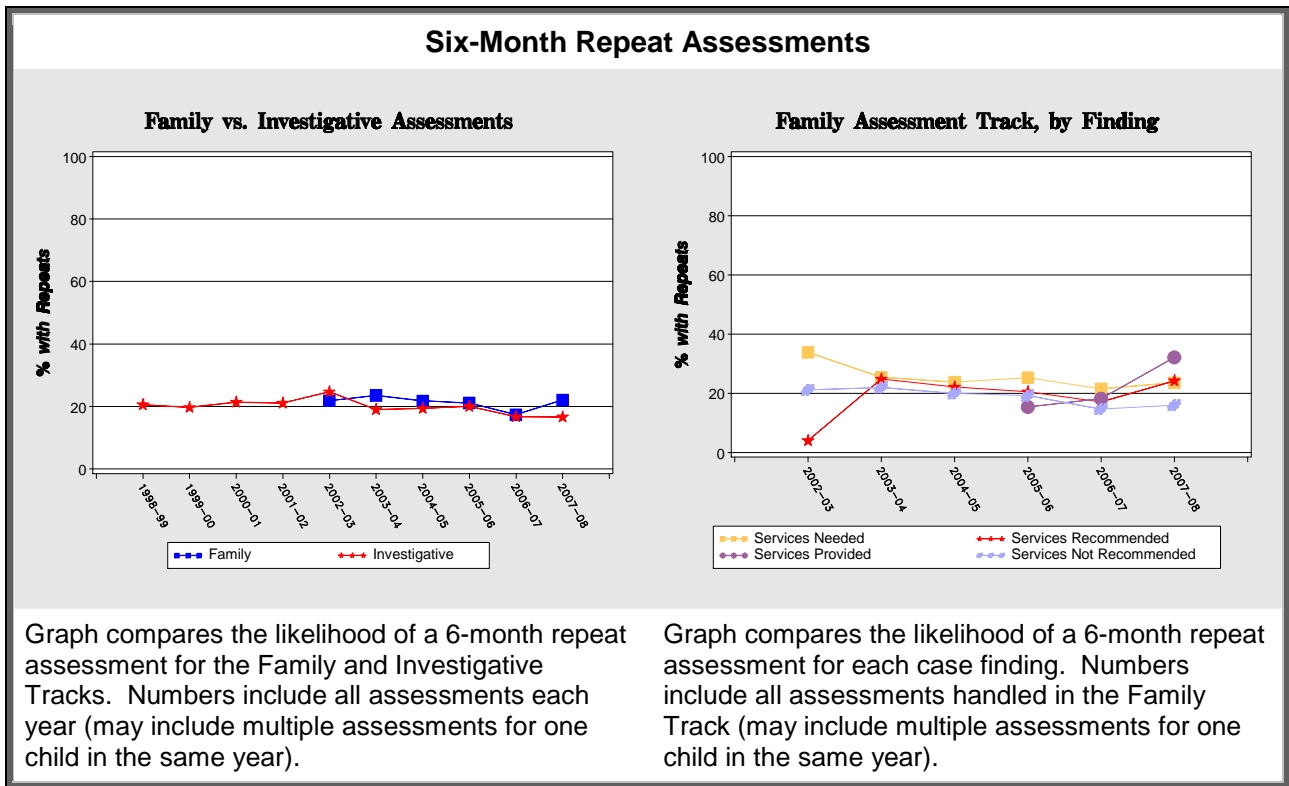
# Buncombe County 2008

## MRS Evaluation Fact Sheet

### Child Safety

	Fiscal Year				Mean Pre-MRS 98-99 thru 00-01		Mean MRS 05-06 thru 07-08		% Change	
	98-99	00-01	05-06	07-08	County	10 Cnty	County	10 Cnty	County	10 Cnty
Rate of Assessments <sup>1</sup>	73.3	75.7	76.4	82.1	73.2	55.1	78.3	57.6	7.0	4.7
Rate of Substantiations <sup>2</sup>	21.0	28.2	22.8	22.3	24.3	19.0	22.5	12.4	-7.2	-34.5
Rate of Substantiated Abuse <sup>3</sup>	2.3	2.7	2.6	1.9	2.5	1.9	2.2	1.2	-11.5	-37.6
6 Month Repeat Assessment Rate <sup>4</sup>	18.7	20.9	20.2	19.9	19.5	15.2	18.7	13.3	-4.3	-12.7
6 Month Repeat Substantiation Rate <sup>5</sup>	7.4	10.8	7.6	6.4	8.7	7.9	7.2	6.4	-17.3	-18.8

Note: MRS was initiated in the 10 pilot counties in August 2002.



<sup>1</sup> Rates are per 1,000 children residing in county.

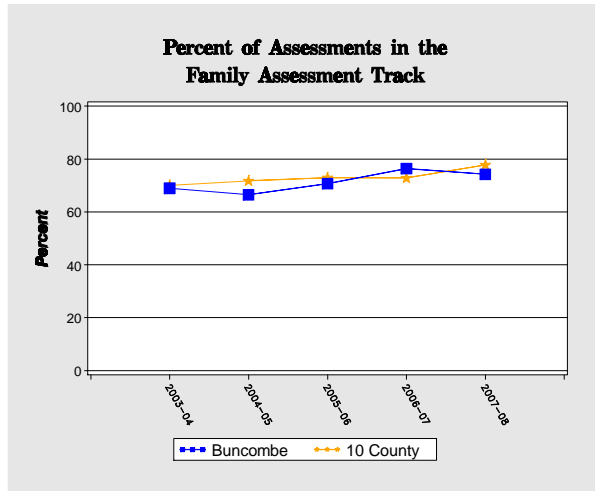
<sup>2</sup> Substantiations include findings of Services Needed.

<sup>3</sup> Abuse always includes substantiations of "Abuse and Neglect."

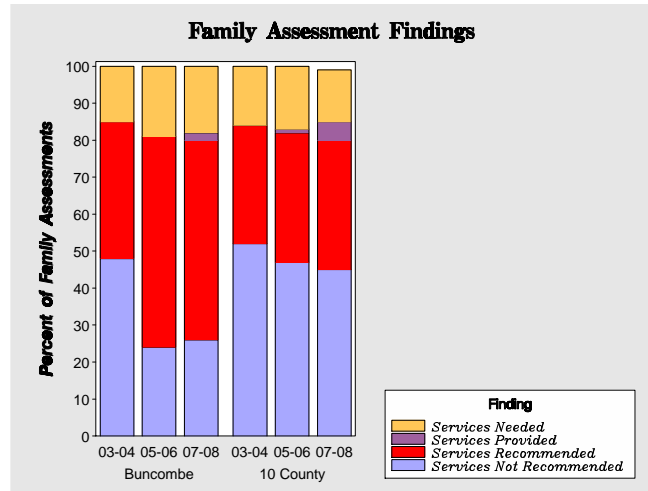
<sup>4</sup> Repeat Assessment is defined as a child who is involved in more than one accepted report within 6 months.

<sup>5</sup> Repeat Substantiation is defined as a child who has a substantiated report within 6 months of another substantiated report.

## Family Assessment Track



Percentage of assessments assigned to the Family Assessment Track. Graph compares select county to the average of the 10 pilot counties from fiscal year 2003-2004 to 2007-2008.



Breakdown of findings within the Family Assessment Track for fiscal years 2003-2004, 2005-2006, and 2007-2008 as compared to the average of the 10 pilot counties.

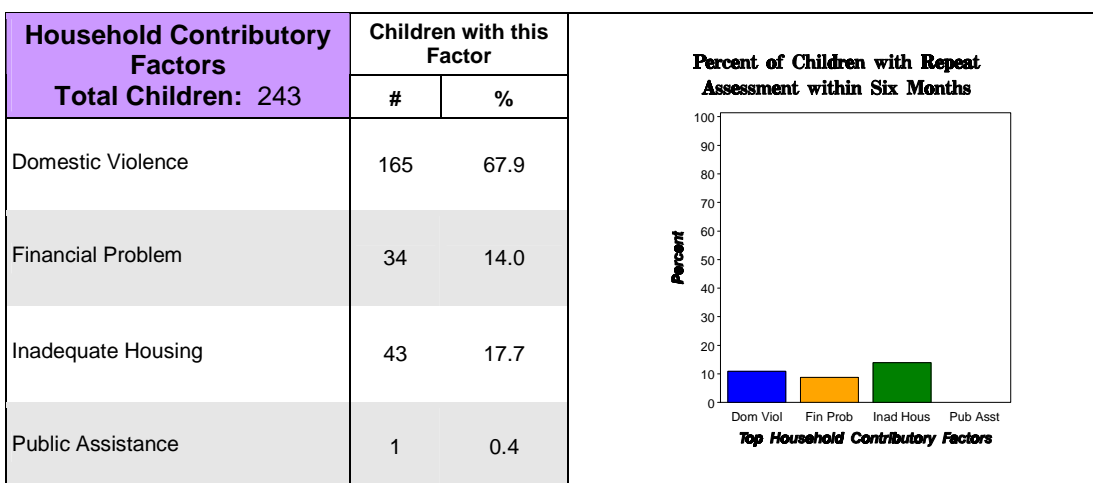
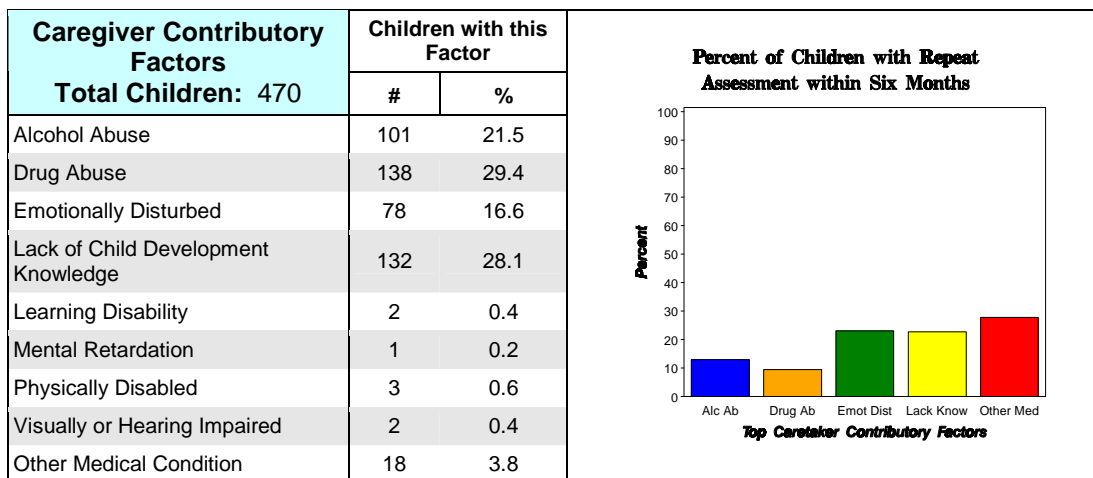
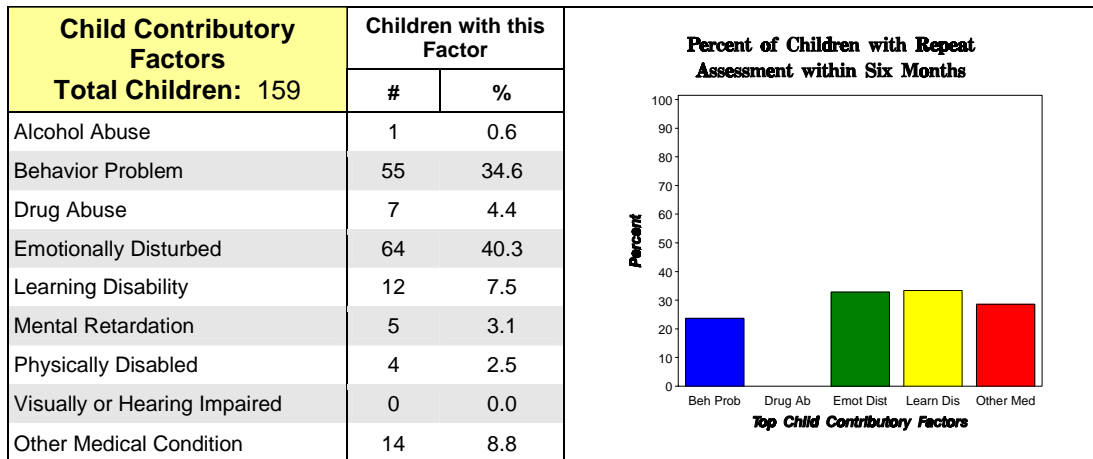
## Timeliness of Response and Time to Case Decision

	Fiscal Year				Mean Pre-MRS 98-99 thru 00-01		Mean MRS 05-06 thru 07-08		% Change	
	98-99	00-01	05-06	07-08	County	10 Cnty	County	10 Cnty	County	10 Cnty
<b>% On-time Response<sup>6</sup></b>										
Overall	96.3	96.2	96.4	96.3	96.5	91.6	96.4	92.4	-0.1	0.8
Reports of Neglect	96.7	97.0	96.9	97.2	97.1	92.0	97.0	92.6	-0.1	0.7
Reports of Abuse	94.1	91.2	93.8	91.8	92.9	90.0	93.0	91.3	0.0	1.4
<b>% On-time Case Decision<sup>7</sup></b>										
Overall	56.7	70.1	76.3	51.0	59.2	71.4	61.8	60.5	4.3	-15.2
Family Assessment Track	-	-	86.8	60.0	-	-	71.1	66.7	-	-
Investigative Track	-	-	52.7	25.7	-	-	36.6	44.0	-	-

<sup>6</sup> On-time Response is calculated as response within 24 hours for reports of Abuse, and within 72 hours for reports of Neglect.

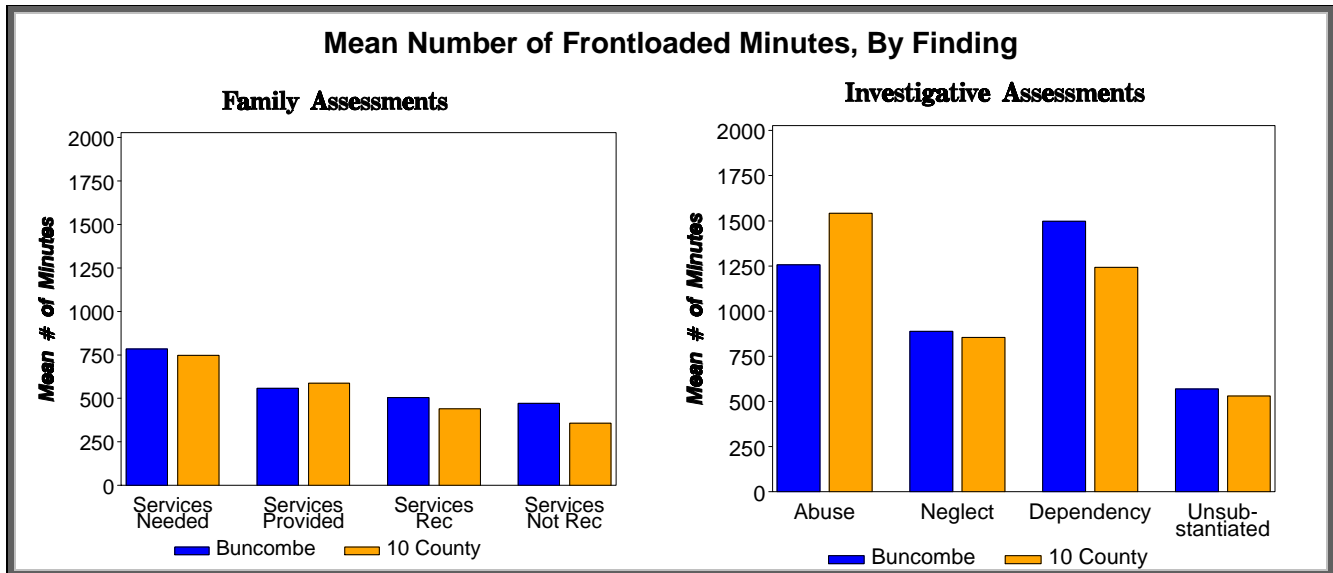
<sup>7</sup> On-time Case Decision is calculated as decision made within 30 days for pre-MRS and Investigative Track assessments, and within 45 days for Family Track assessments.

## Primary Contributory Factors for Fiscal Year 2007-2008



Tables highlight the percentage of children with a finding of Substantiated or Services Needed with a Primary Contributory Factor recorded in 2007-2008. Contributory Factors are separated into categories depending on whether the factor is specific to the child, caregiver or household. **Note that 52.2% of assessments with findings of Substantiated or Services Needed were NOT assigned any Primary Contributory Factors.** Therefore, the data above may not be representative of the entire population. Repeat Assessment is defined as a child who received a finding of Substantiated or Services Needed with an identified Contributory Factor during fiscal year 2007-2008 and who was involved in another accepted report within 6 months of the substantiated report. The % reflects percentage of children with a given Contributory Factor who had a Repeat Assessment.

## Frontloading Services and Other Information for Fiscal Year 2007-2008



### Status of Data Collection and Reporting

- ➔ A total of **4835** assessments were reported to the Central Registry.
- ➔ Of these, **4745** assessments (**98.1%**) were reported through the web-based Multiple Response Database.
- ➔ So, **90** assessments (**1.9%**) reported to the Central Registry were NOT registered in the Multiple Response Database.
- ➔ Of the 4745 assessments reported to both the Central Registry and the Multiple Response Database, **64.4%** included some information about MRS services that were needed, referred or provided.
- ➔ For the assessments with some MRS services information, **46.0%** of the reported services were referred and/or provided with no indication of the service being needed.

#### MRS Services Needed, Referred, and Provided

➔ Of the assessments with reported services, the top 5 identified service needs in the select county accounted for 62.5% of all identified service needs.

Top 5 needs, and how successfully they were referred or provided:

	#	% Referred	% Provided
Case Planning/Case Management	756	41.8	17.7
Access community resources	496	86.5	39.1
Parenting Skills	446	24.7	7.4
Individual Counseling	390	51.3	15.6
Mental Health	347	47.0	10.7

#### Comparison of Blended v. Not Blended 210/215 Cases

	% of Children With a Repeat Assessment	Mean # of Minutes of Frontloaded Services
Blended	9.6	757.8
Team Blended	8.3	750.0
Not Blended	12.6	745.5

Data combined for all 10 pilot counties. Includes all assessments with transfer information.