

Transitioning 1915(b)(3) Services to 1915(i) Authority: *Service Providers*

December 1, 2022

Agenda

- **Reminder: Tailored Plan Launch Update**
- **Transition of 1915(b)(3) Benefits to 1915(i) Services**
- **Services Transitioning to 1915(i) Authority**
- **Deep Dive: 1915(i) Requirements**
 - **Eligibility**
 - **Care Management/Care Coordination**
 - **1915(i) Service Providers**
 - **Network Adequacy**
 - **Quality**
- **Q&A**

Reminder: Tailored Plan Launch Update

Tailored Plans will now go live on April 1, 2023.

- The delayed start will allow Tailored Plans more time to contract with additional providers to support beneficiary choice and to validate that data systems are working appropriately.
- Tailored Care Management began on Dec. 1, 2022.
- Beneficiaries set to receive care through the Tailored Plans will continue to receive behavioral health services, I/DD and TBI supports through their LME/MCO and physical health and pharmacy services through NC Medicaid Direct, just as they do today.

Transition of 1915(b)(3) Benefits to 1915(i) Services

- 1915(b)(3) benefits are a set of critical Home and Community-based Services (HCBS).
- LME/MCOs currently provide 1915(b)(3) services to Medicaid beneficiaries with significant behavioral health needs, I/DD, and TBI.
- On April 1, 2023, most individuals using 1915(b)(3) services will enroll in Tailored Plans; because of federal requirements, Tailored Plans cannot offer 1915(b)(3) services in their current form.
- **To ensure that individuals maintain access to these critical services, North Carolina is transitioning 1915(b)(3) benefits to 1915(i) authority by April 1, 2023.**
- The 1915(i) services will be available through:
 - ✓ **Tailored Plans**
 - ✓ **NC Medicaid Direct**, including individuals enrolled in the Tribal Option, and
 - ✓ **Children & Families Specialty Plan (CFSP)** (upon launch).

Note: While requirements in this presentation are framed in terms of Tailored Plans, they also apply to NC Medicaid Direct and the CFSP.

Services Transitioning to 1915(i)

As part of the transition to 1915(i), the Department is either retaining benefits in their current form or expanding the scope of existing benefits, such as making some benefits available to additional populations.

Current 1915(b)(3) Service		Future 1915(i) Services
In-Home Skill Building	➤	Community Living and Support
One-time Transitional Costs	➤	Community Transition
Individual Support		Individual and Transitional Support <i>Integrates existing Individual Support, Transitional Living Skills, and Intensive Recovery Supports into one service</i>
Transitional Living Skills	➤	
Intensive Recovery Supports*		
Respite	➤	Respite
Supported Employment	➤	Supported Employment

The Department will release clinical coverage policies for the new 1915(i) services.

*North Carolina is planning to update its State Plan Amendment (SPA) to incorporate intensive recovery supports.

1915(b)(3) Services Transitioning to Other Medicaid Programs

The Community Navigator/Community Guide and Deinstitutionalization 1915(b)(3) benefits will be offered under different Medicaid programs instead of under 1915(i) authority.

Current 1915(b)(3) Service	Future Coverage
Community Navigator/ Community Guide	<ul style="list-style-type: none">• Tailored Care Management, the primary care management program for beneficiaries in Tailored Plans, will encompass the community navigator/community guide benefit covered by 1915(b)(3).• Beneficiaries enrolled in Tailored Care Management will have access to the range of supports offered today by community navigators.
Deinstitutionalization (DI) Services*	<ul style="list-style-type: none">• Current 1915(b)(3) DI services will only be available through the 1915(c) Innovations waiver as of Tailored Plan launch.



*The Department will be transitioning individuals currently receiving (b)(3)DI services to the Innovations waiver effective 4/1/2023.

Context: 1915(i) Service Requirements

The Department has established requirements for Tailored Plans, services providers, and AMH+/CMAs for delivery of 1915(i) services that comply with relevant federal rules and regulations.

Key Requirements

This presentation will provide an overview of requirements in the following key areas:

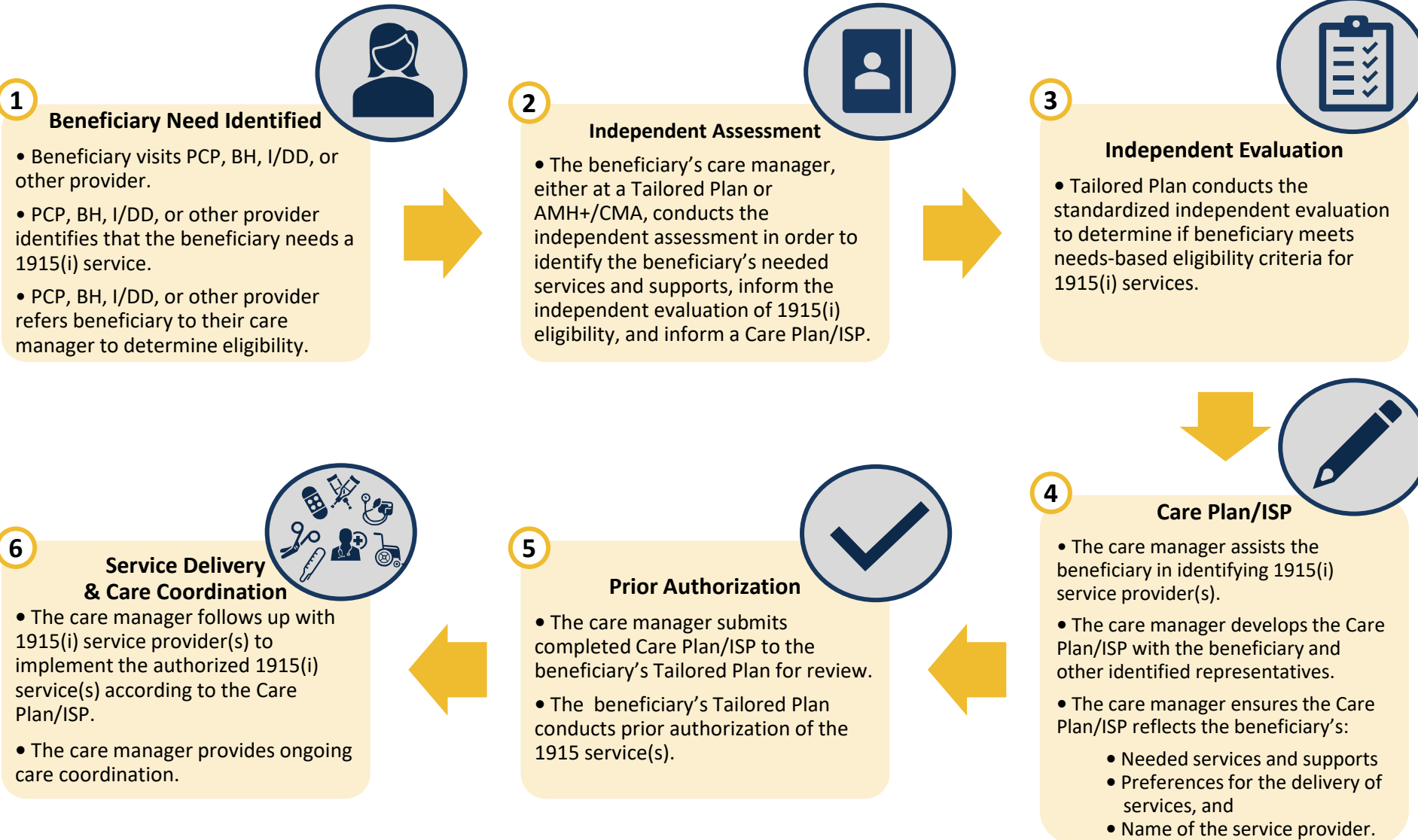
- Eligibility
- Care Management/Care Coordination
- 1915(i) Service Providers
- Network Adequacy
- Quality



The Department has made efforts to ***align 1915(i) requirements with the 1915(c) Innovations and TBI waiver requirements***, where applicable, in order to simplify processes for service providers

Deep Dive: 1915(i) Requirements

Process Flow: Accessing 1915(i) Services in Tailored Plans



Eligibility

Beneficiary Eligibility for 1915(i) Services

Eligibility for 1915(i) services varies on a benefit-by-benefit basis. Eligible populations include beneficiaries with an I/DD, TBI, serious mental illness (SMI), serious emotional disturbance (SED), or severe substance use disorder (SUD) who meet need-based criteria set by the Department.*

	I/DD	SED	SMI	SUD	TBI
Community Living and Support	✓				✓
Community Transition	✓		✓	✓	✓
Individual and Transitional Support		✓ <i>ages 16-21</i>	✓ <i>ages 18+</i>	✓	
Respite	✓	✓ <i>ages 3-20</i>		✓ <i>ages 3-20</i>	✓
Supported Employment	✓ <i>ages 16+</i>	✓ <i>ages 16+</i>	✓ <i>ages 16+</i>	✓ <i>ages 16+</i>	✓ <i>ages 16+</i>



Needs-Based Criteria
<ul style="list-style-type: none"> • Have a functional deficit • Can benefit from skill acquisition (e.g., self-determination, independent living) or • Can benefit from assistance in monitoring a health condition/living skills
<ul style="list-style-type: none"> • Moving to own community living arrangement and need initial set-up expenses/items
<ul style="list-style-type: none"> • At least one deficit in an instrumental activity of daily living (e.g., meal preparation)
<ul style="list-style-type: none"> • Unable to care for themselves in the absence of their primary caregiver
<ul style="list-style-type: none"> • Express the desire to work • Has a pattern of under/unemployment or • Have educational goals that relate to employment goals

*Beneficiaries are not required to meet an institutional level of care to be eligible for 1915(i) benefits.

Determining Eligibility for 1915(i) Services

A beneficiary's Tailored Plan and care manager have responsibility to determine eligibility for 1915(i) services by administering both an independent assessment and an independent evaluation, in line with federal requirements.



Independent Assessment

- **Responsible Entity:** Care managers, whether they are based at an AMH+/CMA or Tailored Plan, must conduct the independent assessment.
- **Purpose:** Determine eligibility for 1915(i) services following referral from a beneficiary's PCP, BH, or I/DD provider; Inform a service plan for 1915(i) services that will be incorporated into the beneficiary's Care Plan/ISP.



Independent Evaluation

- **Responsible Entity:** Tailored Plans must conduct the independent evaluation.
- **Purpose:** Determine the beneficiary meets the needs-based eligibility criteria for 1915(i) service(s).

The Department will require that Tailored Plans and care managers use standardized tools to conduct the independent evaluation and independent assessment.

Care Management/Care Coordination

1915(i) Care Coordination Components: Person-Centered Planning

All beneficiaries receiving 1915(i) services will receive care coordination from a care manager at a Tailored Plan or AMH+/CMA. Members engaged in Tailored Care Management will receive 1915(i) care coordination through their existing care manager.

Person-Centered Planning

As part of care planning to determine the 1915(i) services needed by a beneficiary, care managers will:

- **Independent Assessment.** Conduct an independent assessment for beneficiaries and incorporate results into the beneficiary's Care Plan/ISP.
- **Care Team Meeting:** Explain options regarding the 1915(i) services available to the beneficiary (e.g., service duration) and convene a person-centered planning meeting to complete the Care Plan/ISP.
- **Facilitate Choice of Service Provider.** Assist members with choosing 1915(i) service providers (e.g., provide information about providers, arrange provider interviews).



1915(i) Care Coordination Components: Service Authorization

Care managers will submit the beneficiary's Care Plan/ISP to the Tailored Plan for service authorization. Tailored Plans will review and approve/deny the Care Plan/ISP.

Service Authorization

- **Service Authorization.** Tailored Plans must review and approve/deny a beneficiary's initial Care Plan/ISP within 60 Days of 1915(i) eligibility determination.
- **Service Initiation.** Tailored Plans must ensure 1915(i) services begin within 45 days of Care Plan/ISP approval.
- **Immediately Needed Services.** In the event a 1915(i) service is "immediately needed", care managers may complete and submit an interim plan of care to the Tailored Plan so that services may be approved.
 - Care managers must subsequently complete the full Care Plan/ISP within 60 days of eligibility determination for 1915(i) services.

"Immediately needed" 1915(i) services are defined as services that a beneficiary needs in order to:

- Facilitate discharge from an inpatient setting
- Prevent inappropriate placement in an inpatient setting
- Prevent placement outside the person's current living arrangement
- Address behavioral health/psychiatric conditions that place the person or others at risk of harm
- Prevent imminent loss of competitive integrated employment or offer of such employment

Care Management: Intersection of 1915(i) Care Coordination & Tailored Care Management

All beneficiaries eligible for 1915(i) services are eligible for Tailored Care Management. Accordingly, Tailored Care Management will incorporate all required 1915(i) care coordination activities so that a person can obtain 1915(i) care coordination through their assigned care manager.



Beneficiaries Engaged in Tailored Care Management

- **Responsible Entity:** The beneficiary's assigned care manager, whether at a Tailored Plan or AMH+/CMA, will provide care coordination for 1915(i) services.



Beneficiaries who have Opted Out of Tailored Care Management

- **Responsible Entity:** The beneficiary's Tailored Plan will provide care coordination for 1915(i) services (e.g., conducting independent assessment, completing Care Plan/ISP).

For beneficiaries engaged in Tailored Care Management, The Tailored Plan must:

- **Notify** the beneficiary's organization providing Tailored Care Management the beneficiary has been determined eligible for 1915(i) services,
- **Share** the results of the independent evaluation for 1915(i) services with the beneficiary's organization providing Tailored Care Management

1915(i) Care Coordination Components: Ongoing Care Coordination

1915(i) care coordination is required regardless of whether a beneficiary engages in Tailored Care Management. The beneficiary's assigned care manager, whether at a Tailored Plan or AMH+/CMA, will provide ongoing care coordination for 1915(i) services.

Ongoing Care Coordination

As part of care planning to determine the 1915(i) services needed by a beneficiary, care managers will:

- Assist in choosing a qualified provider to implement 1915(i) service(s) (e.g., providing a list of available providers and arranging provider interviews)
- Monitor Care Plan/ISP goals
- Maintain close contact with the beneficiary, providers and other members of the care team
- Promote the delivery of services and supports in the most integrated setting that is clinically appropriate for the beneficiary
- Monitor service delivery



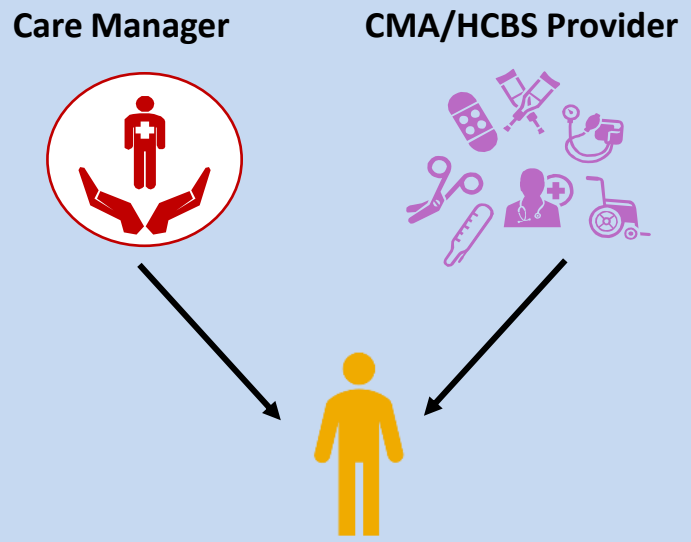
1915(i) Service Providers

Requirements for Conflict-Free Care Management

1915(i) service providers and Tailored Care Management providers must comply with federal conflict of interest requirements, including conflict-free care management, in order to promote consumer choice and limit bias by a care manager when identifying HCBS needs and developing plans to access services.

Conflict-Free Care Management Requirements

A behavioral health or I/DD provider acting as a CMA **cannot deliver both Tailored Care Management and HCBS**, including 1915(i) services, to the same beneficiary.



Requirements for 1915(i) Service Providers

1915(i) service providers must meet provider qualifications required by the Department, as outlined in the 1915(i) SPA.

1915(i) Service Providers

All providers delivering 1915(i) services, with the exception of those delivering Community Transitions, must:

- Be enrolled in NC Medicaid;
- Meet provider qualification policies, procedures, and standards established by the Department;
- Fulfill the requirements of 10A-NCAC 27G;
- Comply with all applicable federal and state requirements (e.g., statutes, rules, policies, communication bulletins and other published instructions released by the Department); and
- Meet national accreditation within one year of enrollment.*

Providers delivering the Community Transitions 1915(i) services must:

- Meets applicable state and local regulations for type of service that the provider/supplier is providing as approved by the Tailored Plan.



Provider requirements for the following 1915(i) services will mirror 1915(c) Innovations requirements:

- Community Living and Support
- Respite

*Accreditation by the Council on Accreditation (COA), the Council on Quality and Leadership (CQL), the Council on Accreditation of Rehabilitation Facilities (CARF), or The Joint Commission

Network Adequacy

Network Adequacy

Tailored Plans have responsibility for ensuring there are sufficient 1915(i) service providers to meet the following network adequacy requirements:

	≥ 2 service providers within each Tailored Plan Region	≥ 2 service providers within 45 minutes of the beneficiary's residence	Not subject to standard
Community Living and Support	✓		
Individual and Transitional Support	✓		
Supported Employment	✓		
Respite	✓ <i>Out-of-home respite</i>	✓ <i>In-home respite</i>	
Community Transition			✓

Quality

Quality

Tailored Plans have responsibility to report 1915(i) quality measures in the following seven domains, in line with federal requirements:

Eligibility Requirements		
<ul style="list-style-type: none">▪ Evaluation for 1915(i) eligibility is provided to all applicants with reasonable indication that 1915(i) services may be needed	<ul style="list-style-type: none">▪ State uses processes and instruments described in the SPA to determine 1915(i) eligibility	<ul style="list-style-type: none">▪ 1915(i) eligibility is reevaluated at the frequency specified in the SPA (at minimum annually)
Abuse, Neglect, Exploitation	Service Plans	Financial Accountability
<ul style="list-style-type: none">▪ State identifies, addresses, and seeks to prevent incidents of abuse, neglect, and exploitation	<ul style="list-style-type: none">▪ Address assessed needs of 1915(i) participants▪ Are updated annually▪ Document choice of services and providers	<ul style="list-style-type: none">▪ State maintains financial accountability for services that are authorized and furnished to 1915(i) participants
Providers	Oversight	HCBS Settings
<ul style="list-style-type: none">▪ Meet required qualifications	<ul style="list-style-type: none">▪ State retains authority and responsibility for program operations and oversight	<ul style="list-style-type: none">▪ Meet requirements specified in the SPA and federal regulation

Q&A