

**NORTH CAROLINA ALCOHOL & DRUG  
ABUSE TREATMENT CENTERS**

**ANNUAL STATISTICAL REPORT**

**FISCAL YEAR 2012**

**TITLE:** Annual Statistical Report  
North Carolina Alcohol & Drug Abuse Treatment Centers  
Fiscal Year 2012

**NUMBER OF PAGES:** 17

**OFFICE OF PRIMARY RESPONSIBILITY:** Resource/Regulatory Management  
Information Systems  
Division of Mental Health,  
Developmental Disabilities and  
Substance Abuse Services  
3019 Mail Service Center  
Raleigh, N. C. 27699-3019  
(919) 733-4460

**PRINCIPAL AUTHOR OR COMPILER:** Jeannette Barham  
Judy Boone  
Resource Regulatory Management  
Information Systems  
DMH/DD/SAS

---

**PUBLICATION DATE** December, 2012

**ANNUAL STATISTICAL REPORT  
FISCAL YEAR 2011-2012  
NORTH CAROLINA ALCOHOL & DRUG ABUSE TREATMENT  
CENTERS**

**INTRODUCTION:**

This is an annual report providing information from selected service indicators on the North Carolina Alcohol & Drug Abuse Treatment Centers (ADATCs). Data included in the report are compiled from client admissions, client movements including discharges, and client diagnostic information. The data are stored in the Division of Mental Health, Developmental Disabilities, and Substance Abuse Services Client Data Warehouse(CDW).

Six detail summary tables are presented in this report. Eight additional graphs are provided to highlight data in the summary tables. Table 1 provides population summary data for fiscal year 2012 for each of the three Alcohol & Drug Abuse Treatment Centers. Data on persons served by region and county are presented in Table 2a, Table 2b, and Table 2c. Table 3a provides demographic characteristics of the persons served at the three ADATCs. Table 3b shows the number of persons served by the three ADATCs by employment status and education. Table 3c reflects the number of persons served by the three ADATCs, for two populations of special interest, pregnant women and injection drug users, shown by commitment level, and by diagnosis. Table 4 provides a comparison of major service indicators for the past ten fiscal years. And Table 5 provides Discharge Days and Average Length of Stay for each of the three Alcohol & Drug Abuse Treatment Centers. Table 6a displays the primary drug of choice for each of the three Alcohol & Drug Abuse Treatment Centers.

**ADMISSIONS:**

Admissions have decreased by **7.9%**, from **4,406** in fiscal year 2011 to **4,058** in fiscal year 2012.

## **DISCHARGES:**

During fiscal year 2012, there were a total of 4,054 direct discharges, indirect discharges, deaths, Transfer-outs and program completions. **Three percent (3%)** were direct discharges. Beginning in 2006, JFK, WBJ, and RJB have started using Program Completion. **Seventy-seven percent (77%)** of total separations were program completions. There was no deaths reported during FY12.

## **PERSONS SERVED:**

The statistic “Persons Served” is calculated by summing the book population at the beginning of the fiscal year plus all admissions and readmissions during the year. There were a total of **4,265** persons served in state Alcohol & Drug Abuse Treatment Centers during fiscal year 2012.

The number of “Persons Served” is the sum of the resident population and on leaves at the beginning of the fiscal year plus the number of admissions during the fiscal year. Table 2 show the number of persons served by the three ADATC’s from each county in the state. Also shown for each county is the ratio of persons served per 100,000 county population. Table 2 shows the number of persons served by the three ADATC’s selected indicators. The “Persons Served” rate ranges from a high of **168** in Buncombe and Graham Counties to a low of **1** in Union County, with an overall statewide rate of **44** .

The average length of stay in FY12 was **18.34** days, a **1.40** days increase from **16.94** days in FY11. The length of stay increased at JFK by **.49** days from **17.60** in FY11 to **18.09** in FY12. RJB’s length of stay decreased by **.19** days. At WBJ, the length of stay increased by **3.57** days.

About 38 percent (**38.2%**) of persons served at the ADATCs in FY12 were women, an decrease from **46.3%** in FY11. The percentage of nonwhite persons served at ADATCs was **24.50%** in FY12, a small increased (**23.9%**) from FY11.

For fiscal year 2012, **41.7%** of the persons served reported alcohol as their primary drug of choice and **19.1%** reported cocaine. In FY12, cocaine, as a primary drug of choice, increased by **.4** % and alcohol, as a primary drug of choice, increased by **2.9%** compared to FY11.

**TABLE 1**  
**FISCAL YEAR 2011-2012 SERVICE INDICATORS**  
**NORTH CAROLINA STATE ALCOHOL AND DRUG ABUSE TREATMENT CENTERS**  
**(ADATC's)**

SERVICE INDICATOR	TOTAL	ADATC JFK	ADATC WBJ	ADATC RJB
TOTAL BOOK POPULATION (07/01/11)	207	74	73	60
TOTAL ADMISSIONS	4,058	1,398	1,363	1,297
TOTAL SEPARATIONS	4,054	1,405	1,358	1,291
Direct Discharges	128	27	43	58
Indirect Discharges	11	3	7	1
Deaths	0	0	0	0
Transfers Out	2	1	1	0
Program Completion	3,118	1,157	1,088	873
Other	795	217	219	359
DISCHARGE REFERRALS	4,054	1,405	1,358	1,291
Self	1	0	0	1
LMEs (Local Managing Entities)	3,825	1,373	1,293	1,159
State Facility	7	1	1	5
Other	221	31	64	126
TOTAL BOOK POPULATION (06/30/11)	211	67	78	66
PERCENT OCCUPIED DURING YEAR*	82%	82%	84%	79%
AVERAGE DAILY RESIDENT POPULATION	194	66	68	60

JFK Capacity = 80

WBJ Capacity = 80

RJB Capacity = 80

**NORTH CAROLINA STATE ALCOHOL AND DRUG ABUSE TREATMENT CENTERS**  
**BY LME AND RESPONSIBLE COUNTY**  
**PERSONS SERVED DURING FY2011-2012**

**TABLE 2**

STATE AND COUNTIES NORTH CAROLINA	RES. POP. AND ON LEAVES 7/1/2011 /1	ADMIS-SIONS /2	PERSONS SERVED /3	RATE** PERSONS SERVED PER 100,000 POP.	STATE AND COUNTIES NORTH CAROLINA	RES. POP. AND ON LEAVES 7/1/2011 /1	ADMIS-SIONS /2	PERSONS SERVED /3	RATE** PERSONS SERVED PER 100,000 POP.
<b>STATE TOTAL/1</b>	<b>207</b>	<b>4,058</b>	<b>4,265</b>	<b>44</b>					
<b>Beacon Center</b>	<b>6</b>	<b>186</b>	<b>192</b>	<b>75</b>	<b>Eastpointe</b>	<b>6</b>	<b>113</b>	<b>119</b>	<b>39</b>
Edgecombe	0	29	29	52	Duplin	1	16	17	29
Greene	1	10	11	51	Lenoir	1	32	33	56
Nash	0	61	61	63	Sampson	1	20	21	33
Wilson	5	86	91	112	Wayne	3	45	48	39
<b>CenterPoint</b>	<b>3</b>	<b>84</b>	<b>87</b>	<b>16</b>	<b>ECBH</b>	<b>28</b>	<b>520</b>	<b>548</b>	<b>90</b>
Davie	0	0	0	0	Beaufort	1	40	41	86
Forsyth	3	68	71	20	Bertie	1	8	9	43
Rockingham	0	12	12	13	Camden	0	1	1	7
Stokes	0	4	4	8	Chowan	0	7	7	47
<b>CrossRoads</b>	<b>1</b>	<b>45</b>	<b>46</b>	<b>17</b>	Craven	4	58	62	59
Iredell	0	38	38	24	Currituck	0	13	13	55
Surry	1	2	3	4	Dare	6	45	51	149
Yadkin	0	5	5	13	Gates	0	0	0	0
<b>Cumberland</b>	<b>3</b>	<b>43</b>	<b>46</b>	<b>14</b>	Hertford	0	11	11	45
<b>Durham</b>	<b>11</b>	<b>168</b>	<b>179</b>	<b>66</b>	Hyde	0	2	2	34
					Jones	1	1	2	19
					Martin	1	17	18	75
					Northampton	1	6	7	32
					Pamlico	1	12	13	98
					Pasquotank	1	21	22	54
					Perquimans	0	6	6	44
					Pitt	11	265	276	162
					Tyrell	0	1	1	23
					Washington	0	6	6	46

\*EXCLUDES VISITING PATIENTS AND OUTPATIENTS, INCLUDES TRANSFERS-IN

\*\*PERSONS SERVED RATE PER 100,000 NC POPULATION

(2011 POPULATION PROJECTIONS)

/1 INCLUDES 0 OUT OF STATE RESIDENTS

/2 INCLUDES 3 OUT OF STATE RESIDENTS

/3 INCLUDES 3 OUT OF STATE RESIDENTS

**NORTH CAROLINA STATE ALCOHOL AND DRUG ABUSE TREATMENT CENTERS**  
**BY LME AND RESPONSIBLE COUNTY**  
**PERSONS SERVED DURING FY2011-2012**

**TABLE 2**

STATE AND COUNTIES	RES. POP. AND ON LEAVES 7/1/2011 /1	ADMIS-SIONS /2	PERSONS SERVED /3	RATE** PERSONS SERVED PER 100,000 POP	STATE AND COUNTIES	RES. POP. AND ON LEAVES 7/1/2011 /1	ADMIS-SIONS /2	PERSONS SERVED /3	RATE** PERSONS SERVED PER 100,000 POP.
NORTH CAROLINA	/1	/2	/3		NORTH CAROLINA	/1	/2	/3	
<b>STATE TOTAL/1</b>	<b>207</b>	<b>4,058</b>	<b>4,265</b>	<b>44</b>					
<b>Guilford</b>	<b>5</b>	<b>103</b>	<b>108</b>	<b>22</b>	<b>Piedmont</b>	<b>21</b>	<b>551</b>	<b>572</b>	<b>41</b>
					Alamance	2	127	129	85
<b>Johnston</b>	<b>1</b>	<b>24</b>	<b>25</b>	<b>14</b>	Cabarrus	0	3	3	2
					Caswell	0	7	7	30
					Chatham	2	32	34	53
<b>Mecklenburg</b>	<b>9</b>	<b>126</b>	<b>135</b>	<b>14</b>	Davidson	1	3	4	2
					Franklin	3	41	44	71
<b>Mental Health Partners</b>	<b>6</b>	<b>157</b>	<b>163</b>	<b>66</b>	Granville	2	70	72	118
Burke	1	66	67	74	Halifax	0	54	54	99
Catawba	5	91	96	62	Orange	3	92	95	70
					Person	6	25	31	78
<b>Onslow Carteret</b>	<b>4</b>	<b>65</b>	<b>69</b>	<b>27</b>	Rowan	0	0	0	0
Carteret	3	39	42	62	Stanly	0	1	1	2
Onslow	1	26	27	15	Union	0	3	3	1
					Vance	2	74	76	167
<b>Pathways</b>	<b>11</b>	<b>169</b>	<b>180</b>	<b>47</b>	Warren	0	19	19	91
Cleveland	1	39	40	41					
Gaston	9	111	120	58	<b>Sandhills</b>	<b>14</b>	<b>249</b>	<b>263</b>	<b>47</b>
Lincoln	1	19	20	25	Anson	1	14	15	58
					Harnett	1	41	42	35
					Hoke	1	16	17	35
					Lee	2	35	37	63
					Montgomery	1	9	10	36
					Moore	4	55	59	66
					Randolph	2	51	53	37
					Richmond	2	28	30	65

\*EXCLUDES VISITING PATIENTS AND OUTPATIENTS, INCLUDES TRANSFERS-IN

\*\*PERSONS SERVED RATE PER 100,000 NC POPULATION

(2011 POPULATION PROJECTIONS)

/1 INCLUDES 0 OUT OF STATE RESIDENTS

/2 INCLUDES 3 OUT OF STATE RESIDENTS

/3 INCLUDES 3 OUT OF STATE RESIDENTS

**NORTH CAROLINA STATE ALCOHOL AND DRUG ABUSE TREATMENT CENTERS**  
**BY LME AND RESPONSIBLE COUNTY**  
**PERSONS SERVED DURING FY2011-2012**

**TABLE 2**

STATE AND COUNTIES NORTH CAROLINA	RES. POP. AND ON LEAVES 7/1/2011 /1	ADMIS-SIONS /2	PERSONS SERVED /3	RATE** PERSONS SERVED PER 100,000 POP.	STATE AND COUNTIES NORTH CAROLINA	RES. POP. AND ON LEAVES 7/1/2011 /1	ADMIS-SIONS /2	PERSONS SERVED /3	RATE** PERSONS SERVED PER 100,000 POP.
<b>STATE TOTAL/1</b>	<b>207</b>	<b>4,058</b>	<b>4,265</b>	<b>44</b>					
<b>Smoky Mountain</b>	<b>19</b>	<b>355</b>	<b>374</b>	<b>69</b>	<b>Wake</b>	<b>10</b>	<b>170</b>	<b>180</b>	<b>19</b>
Alexander	0	8	8	21					
Alleghany	1	2	3	27	<b>Western Highland</b>	<b>27</b>	<b>550</b>	<b>577</b>	<b>109</b>
Ashe	0	9	9	33	Bucombe	19	391	410	168
Avery	0	9	9	50	Henderson	2	50	52	48
Caldwell	4	46	50	60	Madison	2	11	13	61
Cherokee	1	35	36	132	Mitchell	0	7	7	45
Clay	1	4	5	48	Polk	1	8	9	44
Graham	0	15	15	168	Rutherford	0	43	43	63
Haywood	4	91	95	159	Transylvania	2	36	38	114
Jackson	0	17	17	42	Yancey	1	4	5	28
Macon	0	25	25	73					
McDowell	0	17	17	37					
Swain	2	16	18	126	<b>Unknown</b>	<b>0</b>	<b>0</b>	<b>0</b>	
Watauga	1	27	28	54					
Wilkes	5	34	39	56					
<b>Southeastern Center</b>	<b>19</b>	<b>266</b>	<b>285</b>	<b>77</b>					
Brunswick	1	31	32	29					
New Hanover	16	215	231	112					
Pender	2	20	22	41					
<b>Southeastern Reg</b>	<b>3</b>	<b>111</b>	<b>114</b>	<b>43</b>					
Bladen	0	11	11	31					
Columbus	1	45	46	80					
Robeson	2	44	46	34					
Scotland	0	11	11	31					

\*EXCLUDES VISITING PATIENTS AND OUTPATIENTS, INCLUDES TRANSFERS-IN

\*\*PERSONS SERVED RATE PER 100,000 NC POPULATION

(2011 POPULATION PROJECTIONS)

/1 INCLUDES 0 OUT OF STATE RESIDENTS

/2 INCLUDES 3 OUT OF STATE RESIDENTS

/3 INCLUDES 3 OUT OF STATE RESIDENTS



**TABLE-3a**

**PERSONS SERVED CHARACTERISTICS FY 2011-2012**

**NORTH CAROLINA STATE ALCOHOL AND DRUG ABUSE TREATMENT CENTERS  
(ADATC's)**

	Total		JFK		WBJ		RJB	
	PS	%	PS	%	PS	%	PS	%
<b>Total Persons Served</b>	4,265	100%	1,472	100%	1,436	100%	1,357	100%
<b>Age Group *</b>								
00-14	0	0.0	0	0.0	0	0.0	0	0.0
15-17	0	0.0	0	0.0	0	0.0	0	0.0
18-20	77	1.8	30	2.0	20	1.4	27	2.0
21-24	369	8.7	151	10.3	117	8.1	101	7.4
25-34	1,301	30.5	506	34.4	413	28.8	382	28.2
35-44	1,092	25.6	364	24.7	395	27.5	333	24.5
45-54	1,056	24.8	328	22.3	367	25.6	361	26.6
55-64	329	7.7	85	5.8	110	7.7	134	9.9
65 +	41	1.0	8	0.5	14	1.0	19	1.4
<b>Race</b>								
Asian	10	0.2	1	0.1	2	0.1	7	0.5
Black	982	23.0	180	12.2	380	26.5	422	31.1
Indian	56	1.3	12	0.8	37	2.6	7	0.5
White	3,157	74.0	1,269	86.2	1,000	69.6	888	65.4
Other/Unknown	60	1.4	10	0.7	17	1.2	33	2.4
<b>Sex</b>								
Female	1,628	38.2	554	37.6	635	44.2	439	32.4
Male	2,637	61.8	918	62.4	801	55.8	918	67.6
<b>Marital Status</b>								
Married	643	15.1	215	14.6	219	15.3	209	15.4
Separated	320	7.5	137	9.3	80	5.6	103	7.6
Divorced	845	19.8	326	22.1	264	18.4	255	18.8
Widowed	96	2.3	28	1.9	27	1.9	41	3.0
Single	2,343	54.9	754	51.2	846	58.9	743	54.8
Unknown	18	0.4	12	0.8	0	0.0	6	0.4

\* Age at Admission

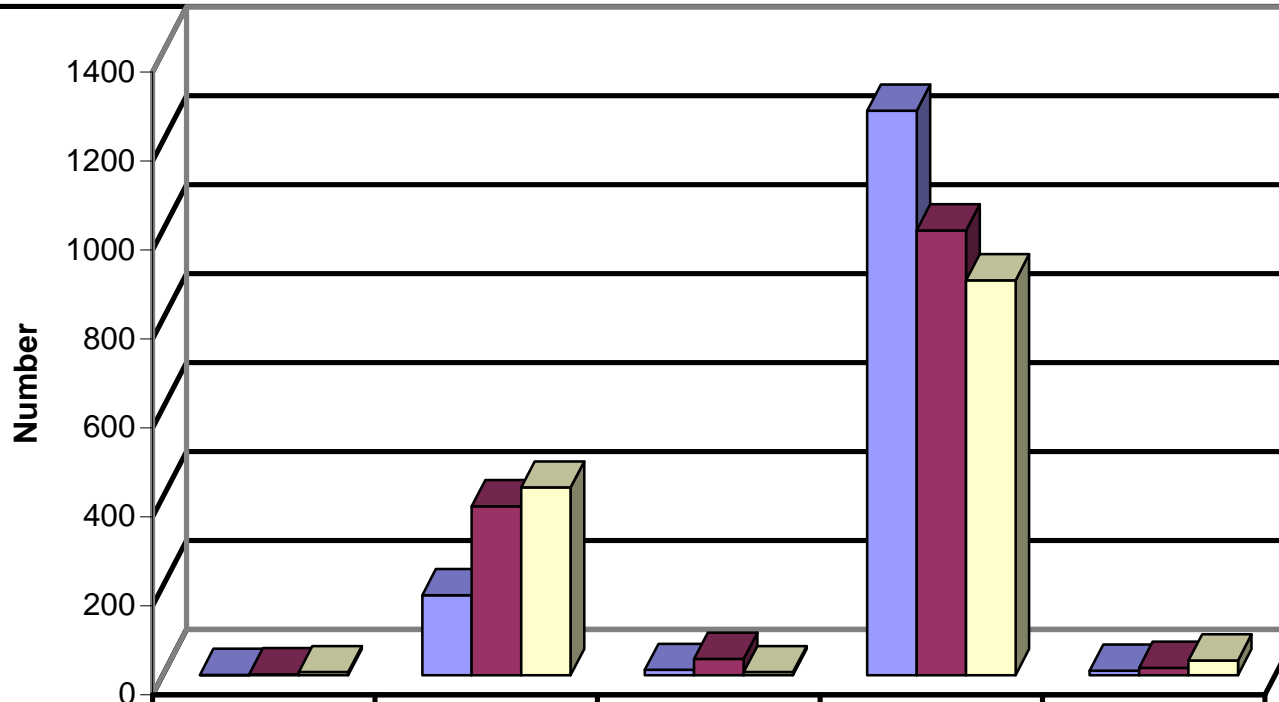
**TABLE-3b**

**PERSONS SERVED CHARACTERISTICS FY 2011-2012**

**NORTH CAROLINA STATE ALCOHOL AND DRUG ABUSE TREATMENT CENTERS  
(ADATC's)**

	Total		JFK		WBJ		RJB	
	PS	%	PS	%	PS	%	PS	%
<b>Total Persons Served</b>	4,265	100%	1,472	100%	1,436	100%	1,357	100%
<b>Employment Status</b>								
Full-time	275	6.4	136	9.2	104	7.2	35	2.6
Part-time	59	1.4	27	1.8	26	1.8	6	0.4
Not in Workforce	7	0.2	5	0.3	2	0.1	0	0.0
Armed Forces	0	0.0	0	0.0	0	0.0	0	0.0
Migrant/Seasonal	0	0.0	0	0.0	0	0.0	0	0.0
Other/Unknown	205	4.8	61	4.1	56	3.9	88	6.5
Unemployed	3,719	87.2	1,243	84.4	1,248	86.9	1,228	90.5
<b>Education</b>								
Kindergarten	0	0.0	0	0.0	0	0.0	0	0.0
1st - 7th Grade	90	2.1	18	1.2	40	2.8	32	2.4
8th Grade	162	3.8	48	3.3	54	3.8	60	4.4
9th - 11th Grade	968	22.7	340	23.1	333	23.2	295	21.7
12th Grade	1,537	36.0	573	38.9	587	40.9	377	27.8
Some College	0	0.0	0	0.0	0	0.0	0	0.0
Baccalaureate degree	173	4.1	55	3.7	57	4.0	61	4.5
Post Graduate degree	0	0.0	0	0.0	0	0.0	0	0.0
Post Bachelor's degree	9	0.2	7	0.5	2	0.1	0	0.0
GED	610	14.3	226	15.4	186	13.0	198	14.6
Associate degree	415	9.7	142	9.6	168	11.7	105	7.7
Technical Trade School	46	1.1	11	0.7	3	0.2	32	2.4
Special Education	1	0.0	0	0.0	0	0.0	1	0.1
None, never attended school	0	0.0	0	0.0	0	0.0	0	0.0
Unknown	254	6.0	52	3.5	6	0.4	196	14.4

**Persons Served at ADATC's by Race, FY20112**



	Asian	Black	Indian	White	Other/Unknown
Blk Mtn.	1	180	12	1269	10
Jones	2	380	37	1000	17
Butner	7	422	7	888	33

TABLE-3c

## PERSONS SERVED CHARACTERISTICS FY 2011-2012

NORTH CAROLINA STATE ALCOHOL AND DRUG ABUSE TREATMENT CENTERS  
(ADATC's)

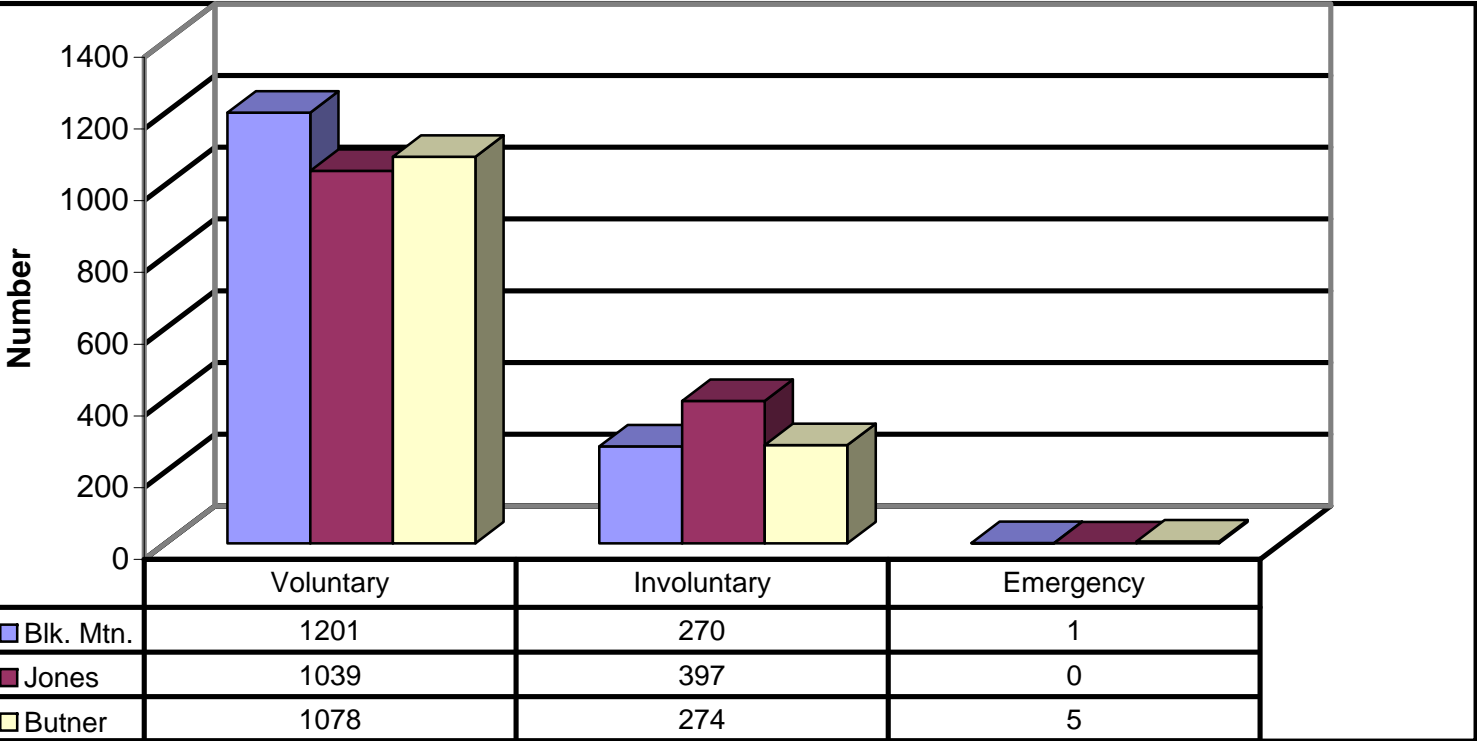
	Total		JFK		WBJ		RJB	
	PS	%	PS	%	PS	%	PS	%
<b>Total Persons Served</b>	4,265	100%	1,472	100%	1,436	100%	1,357	100%
<b>Special Populations</b>								
Injection Drug Users *	658	15.4	365	24.8	159	11.1	134	9.9
All Other Persons Served	3,607	84.6	1,107	75.2	1,277	88.9	1,223	90.1
Pregnant Women	111	2.6	9	0.6	98	6.8	4	0.3
All Other Women	244	5.7	76	5.2	61	4.2	107	7.9
Not Reported	1,190	27.9	442	30.0	442	30.8	306	22.5
<b>Commitment</b>								
Voluntary	3,318	77.8	1,201	81.6	1,039	72.4	1,078	79.4
Involuntary	941	22.1	270	18.3	397	27.6	274	20.2
Emergency	6	0.1	1	0.1	0	0.0	5	0.4
<b>Diagnosis **</b>								
Alcohol Abuse	1,602	37.6	388	26.4	622	43.3	592	43.6
Drug Abuse	2,347	55.0	823	55.9	798	55.6	726	53.5
Schizophrenic	3	0.1	0	0.0	0	0.0	3	0.2
Schizoaffective	5	0.1	0	0.0	0	0.0	5	0.4
Bipolar	8	0.2	5	0.3	0	0.0	3	0.2
Dysthymia	0	0.0	0	0.0	0	0.0	0	0.0
Adjustment	1	0.0	1	0.1	0	0.0	0	0.0
Personality & Other	0	0.0	0	0.0	0	0.0	0	0.0
Major Depression	1	0.0	0	0.0	0	0.0	1	0.1
Other	265	6.2	250	17.0	7	0.5	8	0.6
Unknown	33	0.8	5	0.3	9	0.6	19	1.4
<b>Ethnic Origin</b>								
Hispanic Mex/Amer.	18	0.4	4	0.3	10	0.7	4	0.3
Hispanic Puerto/Ric	9	0.2	3	0.2	2	0.1	4	0.3
Hispanic Cuban	2	0.0	1	0.1	0	0.0	1	0.1
Hispanic Other	2	0.0	2	0.1	0	0.0	0	0.0
Not of Hispanic Orig.	4,234	99.3	1,462	99.3	1,424	99.2	1,348	99.3

\* Any reported injection drug use during the month prior to admission.

\*\*Based on Principle Diagnosis (occasioning the admission)

(Note: "other" category excluded to avoid difference in reporting tobacco use.)

### Persons Served at ADATC's by Commitment, FY2012



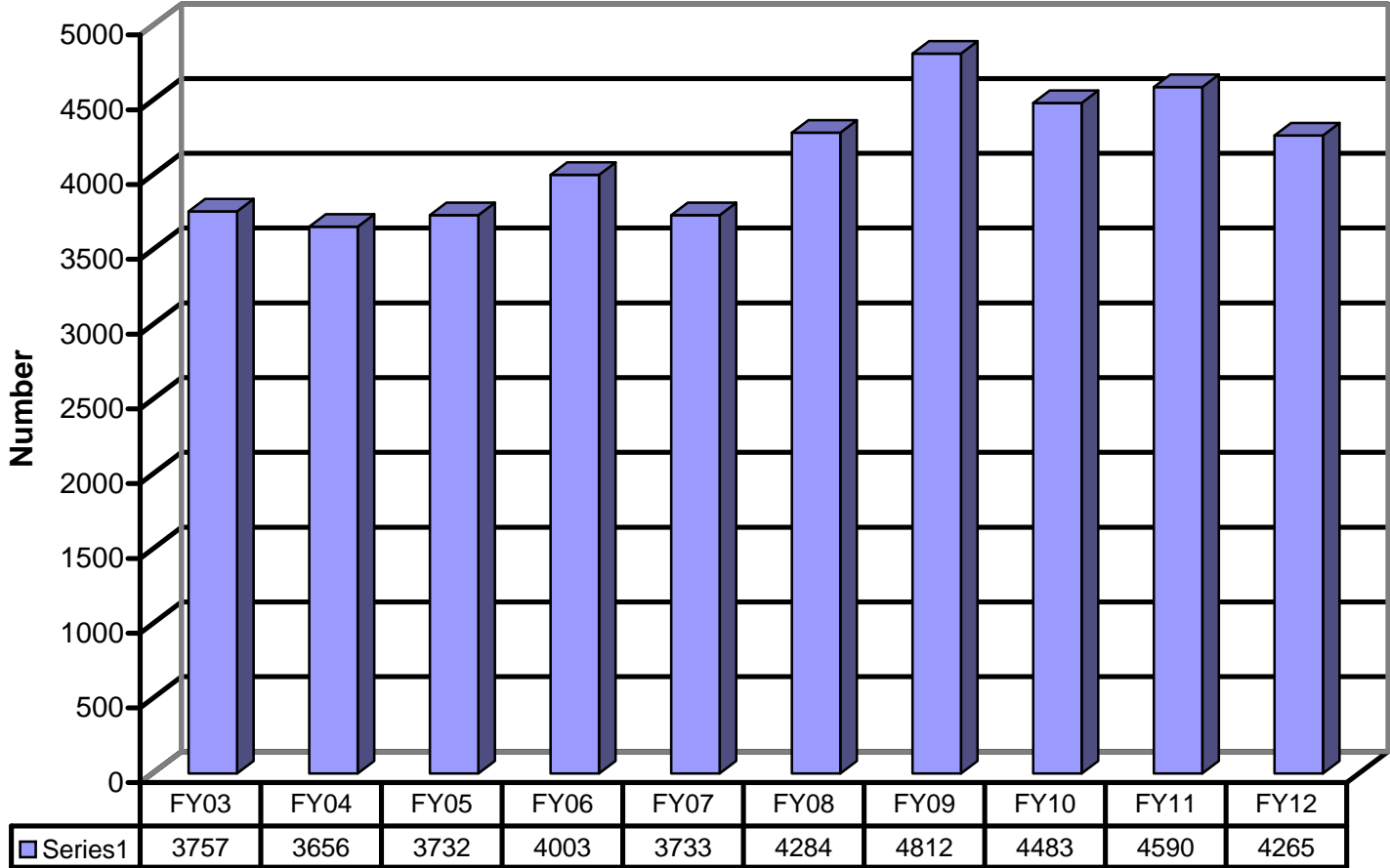
**TABLE 4**

**TRENDS OF MAJOR SERVICE INDICATORS, FY'S 03-12**

**NORTH CAROLINA STATE ALCOHOL AND DRUG ABUSE TREATMENT CENTERS  
(ADATC'S)**

<b>Service Indicators</b>	<b>FY03</b>	<b>FY04</b>	<b>FY05</b>	<b>FY06</b>	<b>FY07</b>	<b>FY08</b>	<b>FY09</b>	<b>FY10</b>	<b>FY11</b>	<b>FY12</b>
<b>Book Pop. July 1</b>	185	168	167	148	117	166	261	182	184	207
<b>Admissions</b>	3572	3488	3565	3855	3616	4118	4429	4301	4406	4058
<b>Persons Served</b>	3757	3656	3732	4003	3733	4284	4812	4483	4590	4265
<b>Total Discharges</b>	3589	3489	3580	3886	3567	4133	4628	4298	4380	4054
<b>Direct Discharges</b>	2543	3480	3561	3874	3552	4117	4408	4211	4364	4040
<b>Indirect Discharges</b>	15	8	18	11	7	3	11	10	3	11
<b>Deaths</b>	0	0	0	0	0	0	0	0	1	0
<b>Transfers Out</b>	3	1	1	1	8	13	209	77	12	3
<b>Average Daily Pop.</b>	168	155	147	135	140	166	192	194	194	192
<b>Book Pop. June 30</b>	168	167	152	117	166	151	184	185	210	211

**Persons Served at ADATC's, FY'S 2003-2012**



**TABLE 5****DAYS IN ADATC & AVERAGE LENGTH OF STAY FOR DISCHARGES, FY12****NORTH CAROLINA STATE ALCOHOL AND DRUG ABUSE TREATMENT CENTERS  
(ADATC'S)**

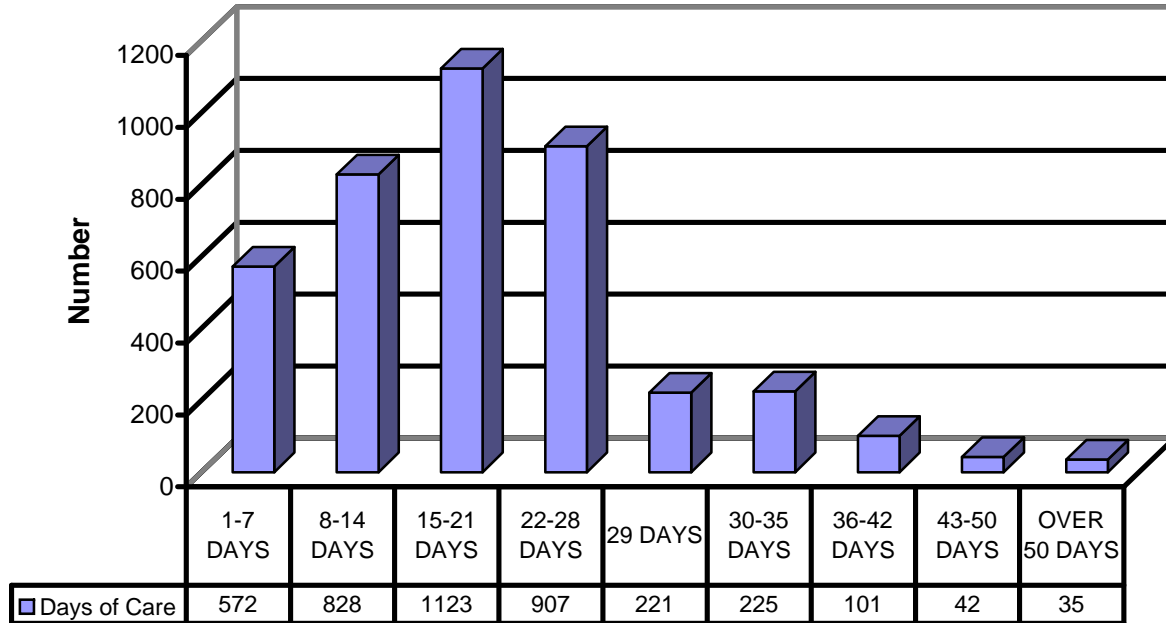
<b>Days in ADATC</b>	<b>Total</b>		<b>RJB</b>		<b>JFK.</b>		<b>WBJ</b>	
	<b>N</b>	<b>%</b>	<b>N</b>	<b>%</b>	<b>N</b>	<b>%</b>	<b>N</b>	<b>%</b>
1 - 7 Days	572	14.1%	148	11.5%	272	19.4%	152	11.2%
8 - 14 Days	828	20.4%	208	16.1%	208	14.8%	412	30.3%
15 - 21 Days	1,123	27.7%	613	47.5%	296	21.1%	214	15.8%
22 - 28 Days	907	22.4%	218	16.9%	393	28.0%	296	21.8%
29 Days	221	5.5%	29	2.2%	97	6.9%	95	7.0%
30 - 35 Days	225	5.6%	42	3.3%	105	7.5%	78	5.7%
36 - 42 Days	101	2.5%	12	0.9%	28	2.0%	61	4.5%
43 - 50 Days	42	1.0%	10	0.8%	3	0.2%	29	2.1%
Over 50 Days	35	0.9%	11	0.9%	3	0.2%	21	1.5%
<b>Total Discharges</b>	<b>4,054</b>	<b>100.0%</b>	<b>1,291</b>	<b>100.0%</b>	<b>1,405</b>	<b>100.0%</b>	<b>1,358</b>	<b>100.0%</b>
<b>Total Days</b>	74,331		23,111		25,413		25,807	
<b>Avg. Length of Stay</b>	18.34		17.90		18.09		19.00	

**Note:**

- \* Discharge data was available for all persons served in FY12
- \* Length of Stay is calculated as (( Discharge Date - Admission Date) + 1 )
- \* Note that we have not adjusted for leave days



### Days in ADATC's and Average Length of Stay for Discharges, FY2012



**TABLE-6a**

**REPORTED PRIMARY SUBSTANCE OF ABUSE, FY12**

**NORTH CAROLINA STATE ALCOHOL AND DRUG ABUSE TREATMENT CENTERS  
(ADATC's)**

Primary Drug	Total		JFK		WBJ		RJB	
	N	%	N	%	N	%	N	%
Alcohol	1,443	41.7	540	41.6	515	41.8	388	41.6
Cocaine	662	19.1	164	12.6	283	23.0	215	23.0
Marijuana	151	4.4	51	3.9	38	3.1	62	6.6
Heroin	211	6.1	34	2.6	104	8.4	73	7.8
Non-Pre. Methadone	6	0.2	0	0.0	4	0.3	2	0.2
Other Opiates	787	22.7	406	31.3	223	18.1	158	16.9
PCP	1	0.0	0	0.0	1	0.1	0	0.0
Other Hallucinogens	7	0.2	0	0.0	6	0.5	1	0.1
Methamphetamine	65	1.9	57	4.4	4	0.3	4	0.4
Other Amphetamines	20	0.6	13	1.0	2	0.2	5	0.5
Other Stimulants	2	0.1	2	0.2	0	0.0	0	0.0
Benzodiazepine	77	2.2	20	1.5	37	3.0	20	2.1
Other Tranquilizers	0	0.0	0	0.0	0	0.0	0	0.0
Barbiturates	2	0.1	0	0.0	0	0.0	2	0.2
Other Sedatives	18	0.5	6	0.5	11	0.9	1	0.1
Inhalants	3	0.1	2	0.2	1	0.1	0	0.0
Over-the-Counter	3	0.1	0	0.0	2	0.2	1	0.1
Other	3	0.1	2	0.2		0.0	1	0.1
Subtotal	3,461	100.0	1,297	100.0	1,231	100.0	933	100.0
Not Reported	804	18.9	175	11.9	205	14.3	424	31.2
Total	4,265		1,472		1,436		1,357	

**Primary Drug of Choice at ADATC's, FY2012**

