



**North Carolina Medication Assistance Program**

2025 Profile (Data from State Fiscal Year 2025)

**Grant Facts**

**\$2M**

Grant funding appropriated from the General Assembly

**11**

Health care professional jobs supported through grant funds

**18,623**

Patients served

**66,784**

Prescription drugs received through The Pharmacy Connection (TPC)

**\$148M**

Value of medications leveraged \*Based on average wholesale prices from TPC

**6%**

Of prescriptions were anti-psychotic, anti-depressant, and other mental health drugs

**117**

Active MAP sites using TPC software license

**\$89.12**

Average contribution of state funds per patient (each patient averages about 5 prescription drugs each month)

**Overview**

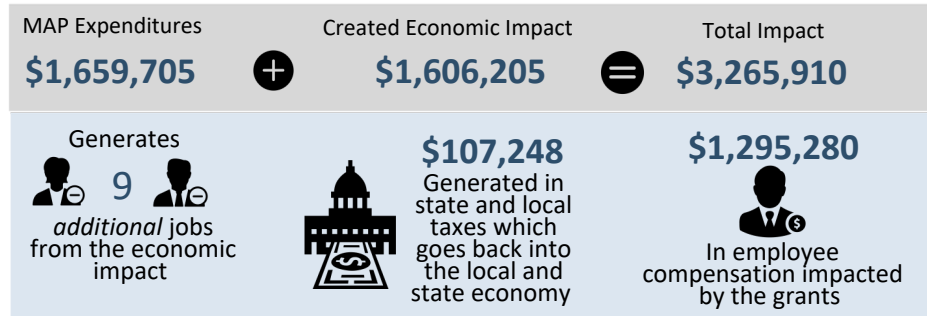
The Medication Assistance Program (MAP) is a safety net for uninsured, low-income individuals in the state. During SFY 2025, 84% of the patients served were uninsured and 91% of patients were at or below 200% of the Federal Poverty Level. MAP provides access to free prescription drugs available through pharmaceutical manufacturers to patients who cannot afford them. This service is currently offered through 117 sites across the state in facilities such as rural health centers, federally qualified health centers, and community and faith-based organizations.

**Program Achievements**

Since the creation of the program in 2003, \$3,201,826,732 in free medications have been accessed for patients who could not afford them. For SFY 2025, the value of medications leverage for the program totaled \$148 million for 18,623 patients.

**Return On Investment and Economic Impact**

Source: IMPLAN



Each MAP grant dollar has a total economic impact of

**\$1.97**



\*Economic impact is estimated to be much greater because improved health outcomes can lead to fewer missed work days, reduced health care costs, and reduced premature morbidity and mortality. Some expenses such as out of state purchases, overhead, and rollover payments are not captured for ROI and economic impact.

**Medication Distribution**

Values for table below are pulled from TPC software

Diabetes	39,180 (59.98%)
Cardiovascular	11,374 (17.41%)
Asthma/Pulmonary	4,287 (6.56%)
Mental Health	3,833 (5.87%)
Various Other Classes	3,047 (4.66%)
Gastrointestinal	2,207 (3.38%)
Allergy/Cold	653 (1.00%)
Analgesics	373 (0.57%)
Rheumatologic	232 (0.36%)
Antimicrobials	134 (0.21%)

0K 10K 20K 30K 40K

Number of Prescriptions

**NC MedAssist:** NC MedAssist is a central fill pharmacy purchasing prescription drugs for patients who meet certain income criteria. The NC General Assembly appropriates funds, administered by ORH, directly to MedAssist. In SFY 25 \$400,000 was appropriated.

**12,737**

Patients served

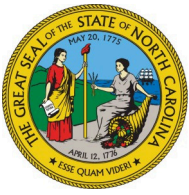
**96,504**

Prescriptions filled based on 90-day supply

**\$39,211,208**

Value of prescriptions filled (AWP)

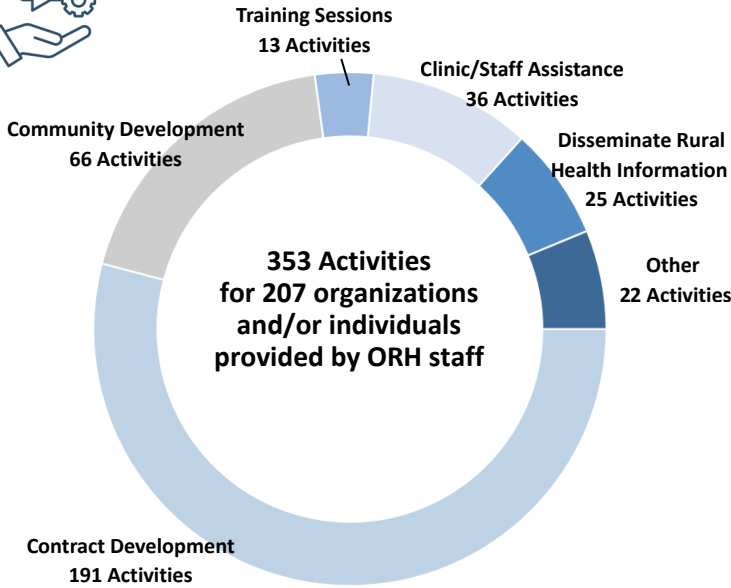
\*NC MedAssist values are self-reported



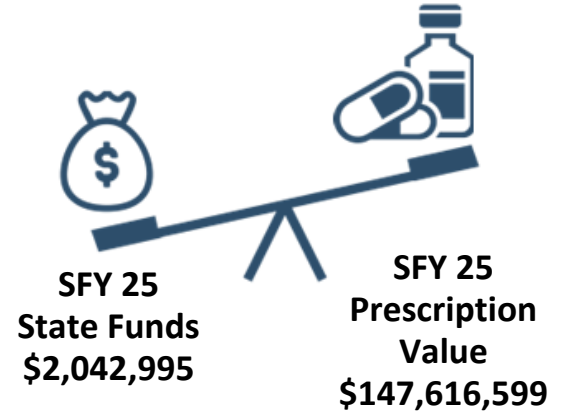
North Carolina Medication Assistance Program

2025 Profile (Data from State Fiscal Year 2025)

Technical Assistance



Program Leverage

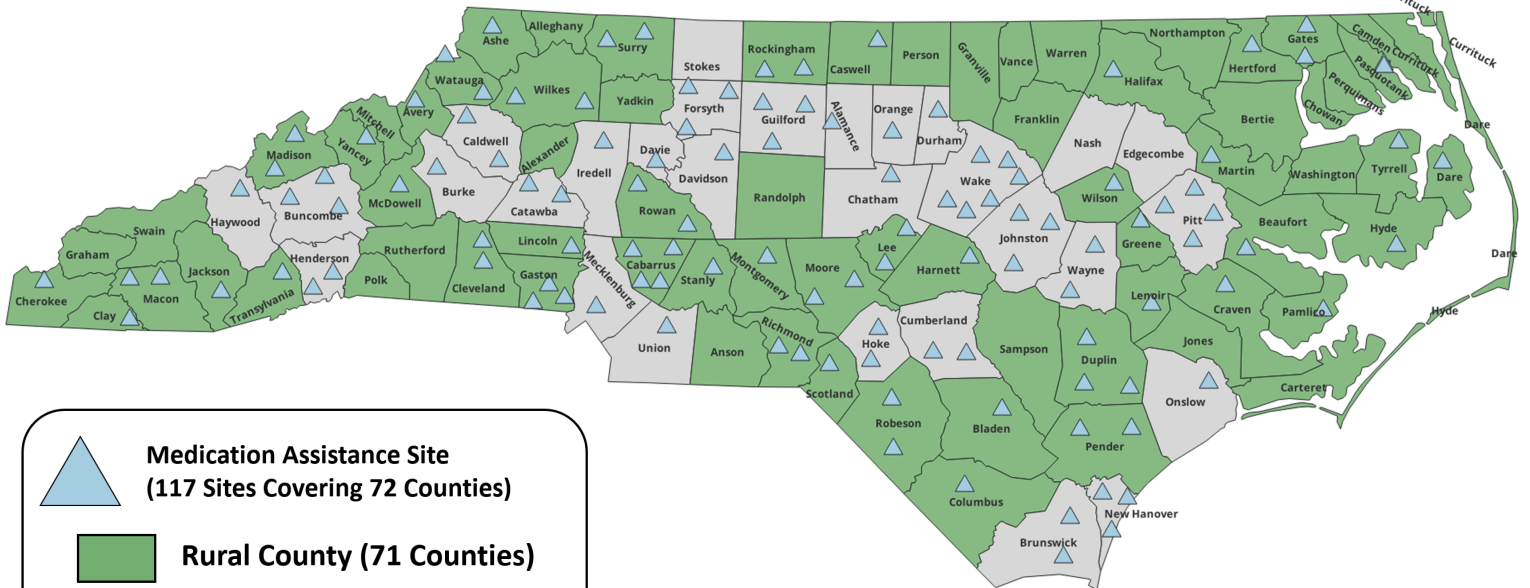


Program Reach

117 Sites Supported

72 Total Counties Covered

47 Rural Counties Covered



Legend for map: Blue triangle = Medication Assistance Site (117 Sites Covering 72 Counties); Green square = Rural County (71 Counties); Grey square = Urban County (29 Counties)

If you have further questions, please contact: Nicole Fields-Pierre, Community Health and Medication Assistance Program Manager. Phone: 919-527-6457. Nicole.Fields-Pierre@dohhs.nc.gov